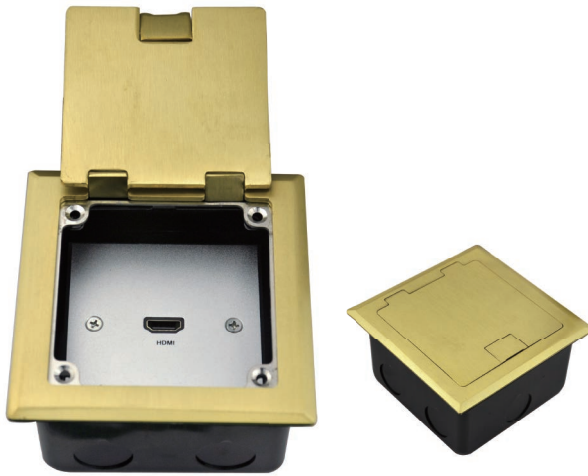


Floor Box



JS-DC120 Series

Description

- 4mm stainless steel panel, with brushed treatment surface;
- Can accommodate 1pcs JS-WP86 wall plate, interface boards are symmetrical distributed;
- Gold and silver panel available.

Dimensions Panel: 120mm*120mm*4mm
Box: 108mm*108mm*65mm
Package: 125mm*125mm*80mm



JS-DC146 Series

Description

- 4mm stainless steel panel, with brushed treatment surface;
- Can accommodate 5pcs AAP Insert Plate;
- interface boards are vertically distributed;

Dimensions Panel: 146mm*146mm*4mm
Box: 137mm*137mm*65mm
Package: 150mm*150mm*85mm



JS-DC180 Series

Description

- 4mm stainless steel panel, with brushed treatment surface;
- Can accommodate 8pcs AAP Insert Plate;
- interface boards are vertically distributed.

Dimensions Panel: 180mm*180mm*4mm
Box: 172mm*172mm*65mm
Package: 190mm*190mm*85mm